

**BETTER
TEXAS™**

FAMILY BUDGETS



ONLINE TOOL



UNDERSTANDING WHAT IT TAKES FOR FAMILIES
TO LIVE A SAFE AND HEALTHY LIFE IN TEXAS

HOW MUCH DOES A FAMILY NEED?

IT DEPENDS ON MANY FACTORS.
BECAUSE LIVING AT THE POVERTY LINE IS NOT ENOUGH.

LOCATION.

Where a family lives dramatically affects how much money is needed to meet basic expenses.

➤ *CHOOSE FROM 26 METRO AREAS IN TEXAS*

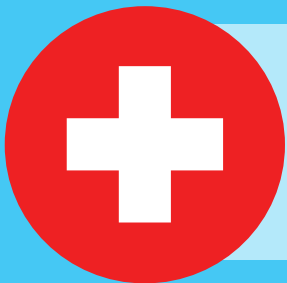


FAMILY SIZE.

Our data tool assumes all adults in a household are working and includes child care as a necessary expense.

➤ *CHOOSE FROM 1 OR 2 WORKING ADULTS AND UP TO 3 CHILDREN*





HEALTH INSURANCE.

Access to consistent, preventative care is critical to a family's well-being. If a medical crisis occurs, health insurance can buffer the financial blow.

➤ *CHOOSE FROM EMPLOYER- OR HOUSEHOLD-PAID PREMIUMS*



SAVINGS.

Families that save are more stable. They can protect against job loss, plan for retirement, help their children go to college.

➤ *CHOOSE UP TO 3 SAVINGS OPTIONS OR NO SAVINGS*

FAMILYBUDGETS.ORG

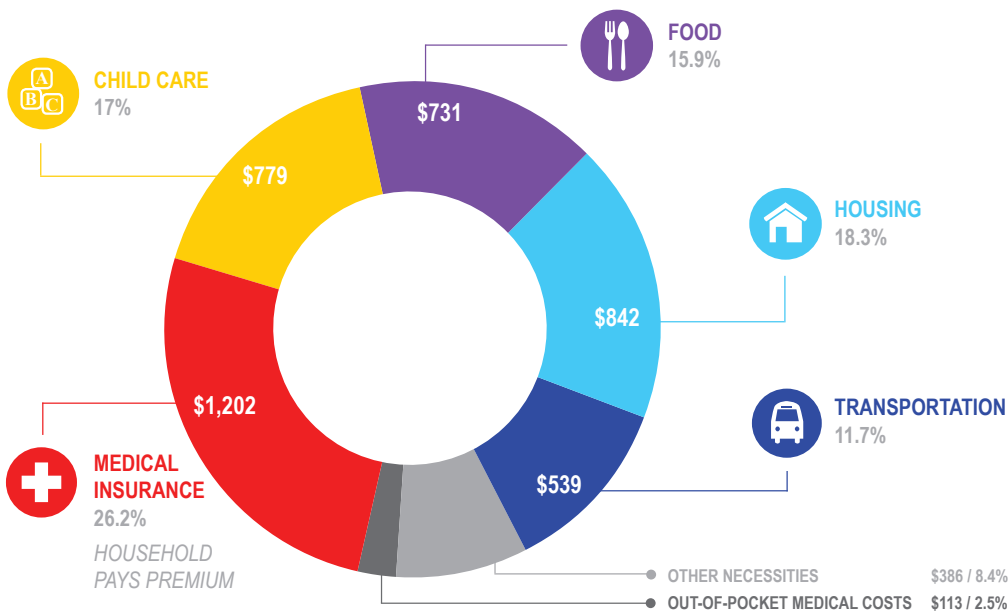
A TEXAS FAMILY WITH 2 WORKING ADULTS AND 2 CHILDREN NEEDS BETWEEN \$36K AND \$63K TO MAKE ENDS MEET



WHERE DOES THAT MONEY GO?

A FAMILY OF FOUR IN SAN ANTONIO...

Needs to make **\$4,945/month**, **\$59,340/year**, to make ends meet (ALMOST TWO TIMES THE POVERTY LEVEL). And, that's without putting anything into savings. That means this family needs both working adults to earn at least **\$15/hour**. But... **63%** of San Antonio's jobs don't pay enough for this family to cover their expenses.



HOW MUCH DO FAMILIES IN YOUR AREA NEED TO MAKE ENDS MEET?

Find out online at FamilyBudgets.org and join us in working for public policies that help improve our children's **well-being**, and provide **ALL Texans** access to quality, affordable **health care**, **strong schools** and colleges, and **good jobs**. Together, we can make a **better Texas**.

FAMILYBUDGETS.ORG

CENTER FOR PUBLIC POLICY PRIORITIES • CPPP.ORG • 512-320-0222