



Learning Through Tactile Experiences

"Touch has a memory" ~ John Keats

Touch is one of the first senses we develop as babies. A gentle loving hug from a parent or caregiver gives a child warm feelings of love and security. Our skin is designed to feel a variety of different sensations and these sensations help us differentiate good feelings from bad feelings.



Encouraging Early Learners Today

2018—Quarter 1

Hands-on Experiences

What are tactile experiences and why are they important?

Tactile learning is a learning style in which children use their hands to learn about the world around them. Children are actively involved in "doing" rather than sitting while they listen or watch. Children who are given the opportunity to DO things in order to learn and gain knowledge are more engaged and focused which leads to better memory and recall. A child who has ample opportunities to use their hands, remembers the experiences better and for a longer period of time.

Toddlers first learn through movement, touching objects, and coloring which builds the foundation to learn enhanced language skills, critical thinking, problem solving, reading and writing. Increased exposure to tactile learning, tummy time, and development of motor skills is directly related to future academic success.

When children learn while using their tactile senses, they are supporting development of all areas of growth including cognitive, social/emotional, and physical.

- ★ Allow your child to use their sense of touch to experience tummy-time, bath-time with soap suds, mud, play-doh, etc.
- ★ Provide materials like dolls, boxes, slime, blocks, pots and pans, and dress up clothes.
- ★ Textured fabric and paper allow your child to experience different sensations with their hands.
- ★ Read stories with your child and allow your child to touch and turn the pages.
- ★ Build props with your child to allow them to experience textures.



Parent Policies - Protect Your Child Care Services

If you receive Child Care Subsidies, you are **REQUIRED** to report any household changes that might effect your Child Care eligibility within **14 calendar days**.

Changes to Report—A few examples:

1. Updated contact information including physical or mailing address, phone number, email, or emergency contact.
2. Change in household composition or size (increase or decrease).
3. Loss of a job, a new job, or any other job

To Report a Change, Call:

(979) 595-2801 ext. 2105

Or Email:

CCMS@bvcoq.org

changes, temporary or permanent, including a pay raise, bonus, and an increase or decrease in hours.

4. Any other change(s) in your life which could affect your eligibility.

Remember! If you do not notify us of a change that makes you ineligible for services, you will be responsible for paying back all child care service payments made during that time period.

It is always better to call or email and ask if it affects your eligibility than to find out later.

[Make Kinetic Sand - Video](#)



AmericanJobCenter

Texas Rising Star Program

Quality Child Care Matters



Research tells us that a child's healthy development depends on safe and positive relationships and experiences during the first few years of life. Choosing quality child care is one of the most important decisions you make for your child as they spend a good portion of their first few years in the care of someone other than their parents or family members. It is important to find a program that is convenient, open when you need it, and will have a long lasting positive impact on your child's development. Most importantly, you and your child need a child care program that makes sure your child is in a physically and emotionally safe environment where he/she can learn new things.

The Texas Rising Star program is voluntary and assists providers who strive to provide a higher level of quality care for the children they serve by giving them access to mentoring and professional development resources designed to assist them in improving the quality of early childhood environments. For a list of local Texas Rising Star Providers, visit our website: bvjobs.org/programs/childcare/

Curriculum Enrichment - Tactile

Tactile experiences contribute greatly to the child's development of focus and attention; two skills they to be successful in school. Attention span is developed when children have the opportunity to engage in activities that they enjoy which require them to focus to attain their goal. The length of time they are able to focus will increase with practice and age.

When a child's attention and focus are geared toward attaining a goal, the behavioral challenges you may have come to expect, both at home and school, tend to decrease because they are actively engaged in the activity at hand.

Movement and music is a great way of creating an environment that promotes focus and attention. A few great examples of this would be "Simon Says" or having the kids *Freeze* when the music stops!



Curriculum Enrichment

- ★ Make play-doh, goop, and moon sand!
- ★ Provide opportunities for children to dance and move to music. Movement contributes to learning and memory.
- ★ Allow children to participate in cooking activities with various textures of foods.

Remember: Children need frequent breaks from just sitting and listening!

Provider Policies - Reporting Issues and Emergency Closures

Sometimes, situations occur that need to be reported to your Provider Specialist.

Here are a few of those instances:

1. CCAA Swipe Card Machine is Not Working or your Phone Line is Down (Parents are unable to report attendance)
2. Emergency Closures
3. 5 Day "No-Call"/"No-Show"
4. Parent intent to not return to your center

CCS Provider Specialist

(979) 595-2801
ext. 2243

CCMS@bvcoq.org

It is important that your Provider Specialist knows when these situations occur to ensure your file is updated properly.

Other situations to report to CCS Staff or your Provider Specialist:

1. Non-payment of the parent share of cost (also known as the Parent Fee)
2. Transfers to or away from your center. You may request a current 2450 referral
3. Center Contact Information or Changes
4. Misuse of CCAA Cards

Make sure you report all changes or situations within 5 business days.

For more information, please refer to the [Provider Handbook!](#)



Learning Through Nature & Environment

"Just living is not enough...one must have sunshine, freedom, and a little flower." ~ Hans Christian Anderson

The benefits of connecting children with nature are many. Natural environments support children's healthy development, creativity, and imagination. In natural environments children have the freedom to move their bodies and use their minds.



Encouraging Early Learners Today

2018—Quarter 2

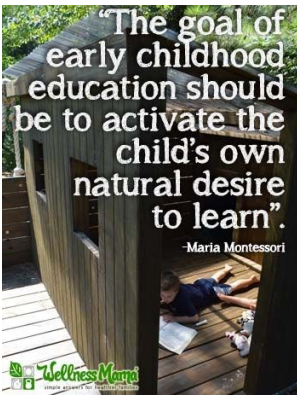
Exploring Nature with Your Child

- ★ Allow time for walks in the park.
- ★ Provide different materials for children to play with to make mud pies.
- ★ Plant a vegetable or flower garden.
- ★ Water grass and flowers.
- ★ Read books with your child about trees, flowers, and insects.
- ★ Build and dig in the earth.
- ★ Listen to birds sing.
- ★ Collect seeds.
- ★ Look at clouds.
- ★ Hunt for caterpillars and ladybugs.
- ★ Help your child learn about recycling.

Natural Environments

Being outdoors feels good for everyone. Children are free to explore, move around, and make noise. Being in nature, children are able to run, jump, climb, skip, hop, and shout. All these activities help children release energy. When children have these natural ways to release excess energy, they are able to focus. Researchers have found that outdoor play calms children and prepares them for learning.

When children play outdoors, they have opportunities to play with other children. In nature children connect with others and learn to share and solve problems. Outdoors, children make up games and rules and develop social skills they will need later in life.



Parent Policies - CCAA Swipe Card Use

If you receive Child Care Subsidies, you have a CCAA Swipe Card. Make sure that you are using your swipe card daily to indicate your child's attendance at his/her daycare center.

Remember! There is a limit to the number of absences your child can accumulate within your 12-months without penalty — and not swiping IS counted as an absence!

There have been some recent changes to the CCAA swipe system which now allow you to only CHECK-IN each child once per day!

Yay for simplicity!

For Questions or to Order a Card, Call:

(979) 595-2801 ext. 2243

Or Email:
CCMS@bvcog.org

Things to Remember:

1. If you miss a day, you are able to go back for up to 6 days to report attendance.
2. Avoid leaving your CCAA card at your child's daycare center and/or allowing anyone, other than the person assigned to the card, to use the card.
3. Each account can have up to 4 CCAA Cards. If someone other than you drops off or picks up your child on a regular basis, order them a card!

Call CCS Staff if you have any questions!



AmericanJobCenter

Texas Rising Star Program

Quality Child Care Matters



Research tells us that a child's healthy development depends on safe and positive relationships and experiences during the first few years of life. Choosing quality child care is one of the most important decisions you make for your child as they spend a good portion of their first few years in the care of someone other than their parents or family members. It is important to find a program that is convenient, open when you need it, and will have a long lasting positive impact on your child's development. Most importantly, you and your child need a child care program that makes sure your child is in a physically and emotionally safe environment where he/she can learn new things.

The Texas Rising Star program is voluntary and assists providers who strive to provide a higher level of quality care for the children they serve by giving them access to mentoring and professional development resources designed to assist them in improving the quality of early childhood environments. For a list of local Texas Rising Star Providers, visit our website: bvjobs.org/programs/childcare/

Learning in Natural Environments

Natural outdoor environments provide children the opportunity to develop an appreciation for our planet.

Childhood experiences with nature play a critical role in developing life attitudes towards the elements that help us live on this planet. These elements, water and air are necessary for growing our food and clean air is necessary for our survival. Learning to value water and air starts in childhood when adults model respect for our environment.

[Peep Plants a Seed - Video on YouTube](#)



Curriculum Enrichment

- ★ Collect pine cones and acorns.
- ★ Collect different size rocks and sort them by size and shape
- ★ Explore your neighborhood park with your child.
- ★ Watch YouTube videos on how to plant a garden.
- ★ Show your child how to water and care for a plant.
- ★ Read books with your child about nature.

Provider Policies - CCAA "Swipe Card" Monitoring

If you accept child care subsidies, your CCS Customers must utilize the Child Care Automated Attendance (CCAA) system to record their child's daily attendance.

In accordance with the Provider Handbook that you received, you are responsible for accessing and reviewing the CCAA system attendance and absence report.

Reviewing CCAA Activity

- ◇ [CCAA Texas Provider Portal](#)
- ◇ Review CCAA data **every three days**
- ◇ Look for any "Z" - The red Z indicates that the parent failed to swipe

CCS Provider Specialist

(979) 595-2801
ext. 2243

CCMS@bvcog.org

Who Should I Call With Issues?:

- ◇ CCAA device issues and troubleshooting, call: 866-320-8720.
- ◇ Questions regarding attendance can be answered by your Provider Specialist.

NEW!! One Swipe Per Day!

- ◇ The system recently changed allowing for a more stream-lined parent process. Parent's only need to use the CHECK-IN function for each child —no more checking out!

For more information on the CCAA system, please review the [Provider Handbook!](#)

Equal opportunity employer/program.

Auxiliary aids and services are available upon request to individuals with disabilities.

Deaf, hard-of-hearing or speech-impaired customers may contact: Relay Texas (800) 735-2989 (TTY) or 711 (Voice).



Learning Through Music & Movement

"Our children should be educated with music and physical education." ~ Aristotle

When children dance they are using their bodies and their minds. Music gives children opportunities to move their bodies to different rhythms in different ways. Music and movement contribute to children's healthy development.



Encouraging Early Learners Today

2018—Quarter 3

Incorporating Music and Movement into Daily Activities

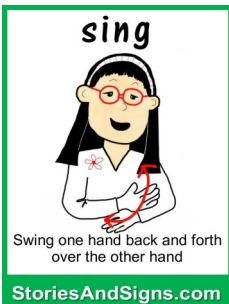
Music and Movement

Music and movement are necessary for children's physical, cognitive, and social development. When they hear music, young children enjoy moving around. It is natural for them to dance and move with friends.

Music is a tool that can be used to help the brain establish connections which your child will need for later learning to read and do math. These connections need to be made early in their life for children to be successful in school.

Studies have shown that keeping a beat is linked to language development and helps with developing balance. Movement and rhythm stimulate the front part of the brain, which is important in language development and self-control.

- ★ Play musical chairs with your children.
- ★ Make musical toys with your child; like shakers, drums and rhythm sticks.
- ★ Make time to listen to different types of music with your children.
- ★ Play the Kazoo with your child. This helps you child develop rhythm.
- ★ Provide opportunities for your child to run and skip.
- ★ Help your child learn to balance by encouraging different movements such as standing on one foot.



Parent Policies - Protect Your Child Care Services

If you receive Child Care Subsidies through Workforce Solutions Brazos Valley, you have a CCAA Swipe Card. Make sure that you are using your swipe card daily to indicate your child's attendance at his/her daycare center.

Remember! There is a limit to the number of absences your child can accumulate without penalty—and not swiping IS counted as an absence!

If you miss a day, you are able to go back for up to 6 days to report attendance.

Each account can have up to 4 CCAA cards, so if someone other than you picks up your child on a regular basis, order them their own card!

Things to Avoid:

1. Leaving your CCAA card at your child's daycare center.
2. Allowing anyone, other than the person assigned to the card, to use the card.
3. Swiping a child as present when they were not in attendance.

It is always better to call and ask about your child's absences and swipe history than to find out later.

To Check Your Child's Attendance, Call:
(979) 595-2801 ext. 2243
Or Email:
CCMS@bvcog.org

Equal opportunity employer/program.

Auxiliary aids and services are available upon request to individuals with disabilities.

Deaf, hard-of-hearing or speech-impaired customers may contact: Relay Texas (800) 735-2989 (TTY) or 711 (Voice).



AmericanJobCenter

Texas Rising Star Program

Quality Child Care Matters



Research tells us that a child's healthy development depends on safe and positive relationships and experiences during the first few years of life. Choosing quality child care is one of the most important decisions you make for your child as they spend a good portion of their first few years in the care of someone other than their parents or family members. It is important to find a program that is convenient, open when you need it, and will have a long lasting positive impact on your child's development. Most importantly, you and your child need a child care program that makes sure your child is in a physically and emotionally safe environment where he/she can learn new things.

The Texas Rising Star program is voluntary and assists providers who strive to provide a higher level of quality care for the children they serve by giving them access to mentoring and professional development resources designed to assist them in improving the quality of early childhood environments. For a list of local Texas Rising Star Providers, visit our website: bvjobs.org/programs/childcare/

Music and Movement

Children enjoy dancing and singing because music and movement involve so many senses. The more senses that are involved in an activity, the more enjoyable the learning is for the children. When children sing and move their bodies to a song, they learn words in the song faster and remember them longer.

Music and movement inspires creativity and imagination in children. With their friends, children can plan and perform a concert for their parents and teachers. Planning and performing little shows helps them build important life skills.



Curriculum Enrichment

- ★ Provide opportunities for children to explore different instruments.
- ★ Dance to the rhythm of different types of music.
- ★ Allow children to make up dance routines with scarves.
- ★ Build a stage so your children can pretend they are performing.
- ★ Host a talent show!

Provider Policies - Reporting Issues and Emergency Closures

Sometimes, situations occur that need to be reported to your Provider Specialist.

Here are a few of those instances:

1. CCAA Swipe Card Machine is Not Working or your Phone Line is Down (Parents are unable to report attendance)
2. Emergency Closures
3. 5 Day "No-Call"/"No-Show"
4. Parent intent to not return to your center

It is important that your Provider Specialist knows when these situations occur to ensure your file is updated properly.

CCS Provider Specialist

(979) 595-2801
ext. 2243

CCMS@bvccog.org

Other situations to report to CCS Staff or your Provider Specialist:

1. Non-payment of the parent share of cost (also known as the Parent Fee)
2. Transfers to or away from your center. You may request a current 2450 referral
3. Center Contact Information or Changes
4. Misuse of CCAA Cards

Make sure you report all changes or situations within 5 business days.

For more information, please refer to the [Provider Handbook!](#)

Equal opportunity employer/program.

Auxiliary aids and services are available upon request to individuals with disabilities.

Deaf, hard-of-hearing or speech-impaired customers may contact: Relay Texas (800) 735-2989 (TTY) or 711 (Voice).



Learning Through Exploration & Discovery

"A child, more than anyone else, is a spontaneous observer of nature." Maria Montessori

Young children experience learning through play and exploration in a variety of settings including, the outdoors, home, neighborhood, and child care programs .



Encouraging Early Learners Today

2018—Quarter 4

Playing in Nature

Research suggests that play, exploration and discovery are an important process in promoting children's development in all areas; cognitive, social, emotional and physical.

The outdoors is a natural setting that promotes multiple areas of development by promoting exploration, curiosity and interactions with others. As children explore their surroundings, they become curious about how things work and begin to ask questions. In their search for answers they learn new concepts, build friendships, and develop communication skills.

These experiences give meaning to what the child has learned. Experiences that are meaningful to children are remembered longer and serve as a foundation for future learning.

Support Exploration

- ★ Allow your child to make mud pies and plant a garden.
- ★ Sit with your child quietly and listen to birds sing.
- ★ Make time to listen to your child's questions and ideas.
- ★ Read stories with your child that encourage curiosity and questions.
- ★ Design projects with your child by allowing your child to lead the way.



Parent Policies - Protect Your Child Care Services

If you receive Child Care Subsidies, you are **REQUIRED** to report any household changes that might effect your eligibility within **14 calendar days**.

Changes to Report—A few examples:

1. Updated contact information including physical or mailing address, phone number, or emergency contact.
2. Change in household composition or size (increase or decrease).
3. Loss of job, new job, or other job chang-

To Report a Change, Call:
(979) 595-2801
 ext. 2105
 Or Email:
CCMS@bvcog.org

es, temporary or permanent, including a pay raise, bonus, and an increase or decrease in hours.

4. Any other change in your life which could affect your eligibility.

Remember! If you do not notify us of changes that make you ineligible for services, you will be responsible for paying back all child care payments made during that time.

It is always better to call and ask if it affects your eligibility than to find out later.



AmericanJobCenter

Texas Rising Star Program

Quality Child Care Matters



Research tells us that a child's healthy development depends on safe and positive relationships and experiences during the first few years of life. Choosing quality child care is one of the most important decisions you make for your child as they spend a good portion of their first few years in the care of someone other than their parents or family members. It is important to find a program that is convenient, open when you need it, and will have a long lasting positive impact on your child's development. Most importantly, you and your child need a child care program that makes sure your child is in a physically and emotionally safe environment where he/she can learn new things.

The Texas Rising Star program is voluntary and assists providers who strive to provide a higher level of quality care for the children they serve by giving them access to mentoring and professional development resources designed to assist them in improving the quality of early childhood environments. For a list of local Texas Rising Star Providers, visit our website: bvjobs.org/programs/childcare/

Discovery and Exploration Play

Active participation in the exploration of their environments helps children develop life long skills. Skills such as problem-solving, communication, and collaboration are supported when children are able to direct their play. Working together, children learn to solve problems, to cooperate and to communicate with others.

Discovery and exploration play is well suited for both indoor and outdoor activities. These environments provide opportunities for stimulating curiosity and wonder. How does a flower grow? What makes ice melt? Why are lemons sour and bananas sweet?



Curriculum Enrichment

- ★ Spend some time with your child in your local park.
- ★ Ask your child how and why questions. Questions encourage curiosity.
- ★ Take your child to a children's museum .
- ★ Read stories to your child about people who discover new things.
- ★ Allow your child's questions and curiosity lead the way .

Provider Policies - Parent Share of Cost & Difference in Cost of Care

When a Child Care Services Specialist calls to inform you of any new referrals, they will mail out a 2450 Authorization Form. This form confirms the child's name, the approved referral dates, and Parent Share of Cost—amount paid to you by the parent.

In addition to the Parent Share of Cost, there are two types of fees that you may be able to charge CCS parents. They are:

1. Difference in Cost of Care—This is the amount you are allowed to charge that is the difference between your published rate and the rate that CCS pays—**IF** a difference exists.

CCS Provider Specialist

(979) 595-2801
ext. 2243

CCMS@bvco.org

2. Additional Fees—Any fees that are not included in your daily rate, such as meals, transportation, and special activities or field trips.

There are fees that you are NOT allowed to charge the parent. Those fees include:

1. Registration Fees
2. Supply Fees
3. Curriculum Fees

For more information on what you should and should not be charging CCS parents, please read the [Provider Handbook!](#)